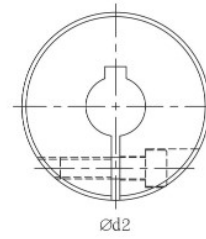
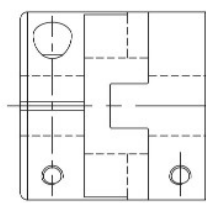
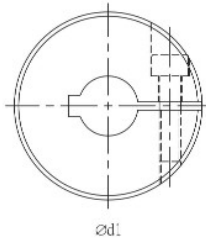
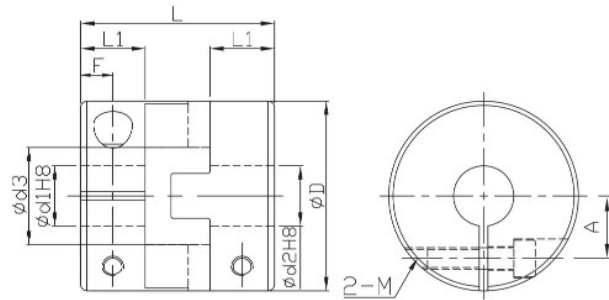


# FACJ



- Operating temperature : -20°C~80°C
- Offset of angular, parallel, or axial deviation are individual allowed value, so couple reasons of axial offset appearing at same time would reduce the unit allowable value.
- Select bigger lock torque of clamping screw than listed values on catalogs when shaft diameter is too small.
- List torque tightness values are only for general standard.
- Available options for key way per inner diameter is bigger than 6mm. (Refer to page 39)



FACJLK (key way Ød1 side)  
 FACJRK (key way Ød2 side)  
 FACJWK(key way Ød1 and Ød2 side)

Component	Material	Surface finish	Accessories
Main frame	Aluminum Alloy	Anodized	Clamping screw
Spacer	Black (POM)	—	

Model no.	ØD	Ød1&Ød2 selection *Ød1 ≤ Ød2										Ød3	L	L1	F	A	Clamping screw	
		14	15	16	18	20	22	25	28	30	35						M	Lock torque (N·m)
FACJ	44	●	●	●	●	●						22.5	46	15	7.5	14.5	5	*8.4
	55				●	●	●	●				28	57	19	9.5	17	6	*14.4
	70						●	●	●	●	●	39	77	25	12.5	24	8	*30.0

★Moment of inertial torque and weight calculated by maximum diameter.

Model no.	ØD	Allowable wrench torque (N·m)	Allowable misalignment		Static torsional stiffness (N·m/rad)	Max. RPM (r/min <sup>-1</sup> )	★ Moment of inertia (kg·m <sup>2</sup> )	★ Weight (g)
			Angular (°)	Parallel (mm)				
FACJ	44	26	2	1	1500	12000	4*10 <sup>-5</sup>	140
	55	40		1.5	2800	10000	11*10 <sup>-5</sup>	260
	70	72		2	4800	8000	40*10 <sup>-5</sup>	450

◎FAMJ&FACJ spacer selection, please refer to P.43

Ordering Example: 

FACJ44	-	16	-	18	-	100 PCS
Model no.		Ød1		Ød2		Q'ty