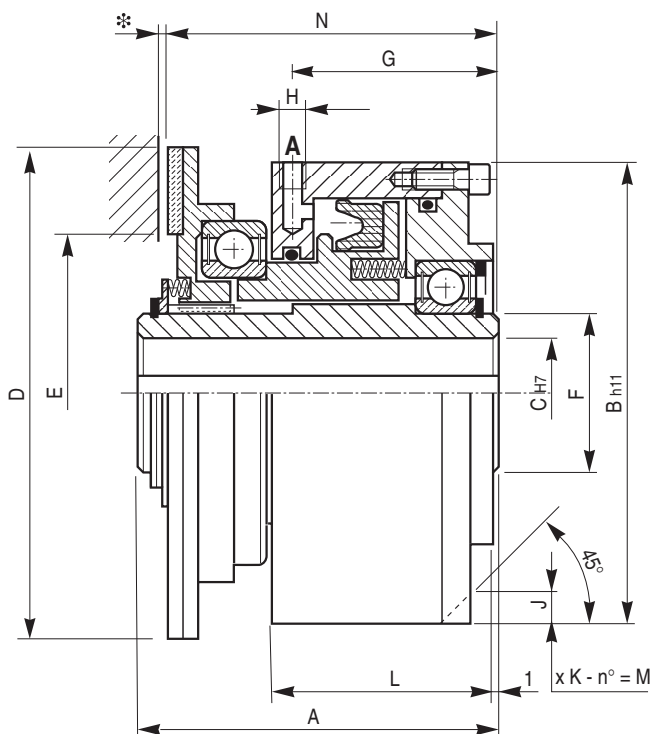


SERIE / MODEL	MP □□
CODICE / CODE	03.53.□□.01



A = Alimentazione aria / Air supply
* Regolazione del traferro / Air gap adjustment = pag. 52

□□	Momento Torque Ms (Nm)	Giri/1' R.P.M. max	Pressione di apertura Release pressure (bar)	Volume cilindro Cilinder volume (cm ³)	Spinta assiale sul disco Axial thrust on the disk daN	Peso Weight (kg)
00	20	3000	6	7	136	3,7
01	30	3000	6	9	200	5,0
02	50	2400	6	11	260	6,3
03	65	2400	6	13	288	8,3
04	100	2000	6	20	442	12,5
05	140	2000	6	24	560	16,9
06	240	1600	6	35	778	24,3
07	350	1400	6	42	948	31,6

□□	A	B	C		D	E	F	G	H	J x K	L	M	N
			min	max									
00	88	108	14	20	112	80	30	48	1/8"	6 x 6	54	3	80
01	92	123	15	25	118	84	35	51	1/8"	8 x 8	57	3	84,5
02	96	138	18	34	136	102	45	55	1/8"	8 x 8	61	3	88
03	103	145	18	34	146	102	45	58	1/8"	8 x 8	64	3	94
04	114	178	20	46	168	120	60	63	1/8"	9 x 9	70	3	104,5
05	124	198	25	50	178	126	65	70	1/4"	10 x 10	78	3	114
06	132	228	30	60	218	162	75	74	1/4"	10 x 10	82	4	121
07	141	248	30	68	248	188	85	78	1/4"	10 x 10	86	4	128