

NEU



STR - - -.4200

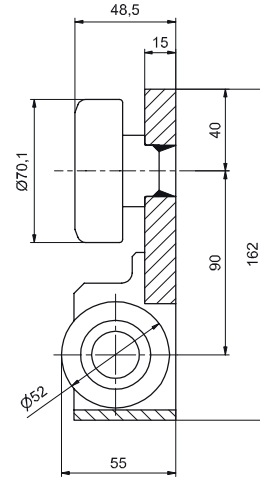
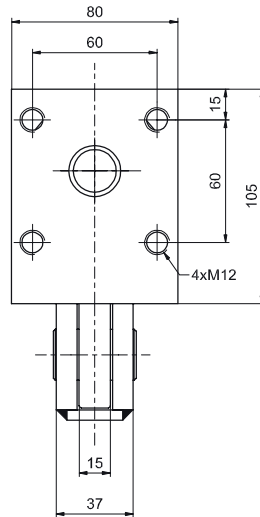
Schwerlast-Tigerrolle Edelstahl

Komplett aus 1.4301 INOX
mit Schwerlastkugellager.

Heavy duty Tiger bearing stainless steel

Completely made of
1.4301 stainless steel with
heavy load ball bearing.

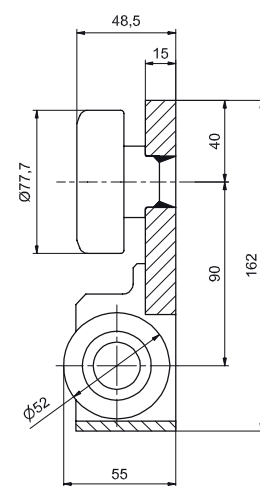
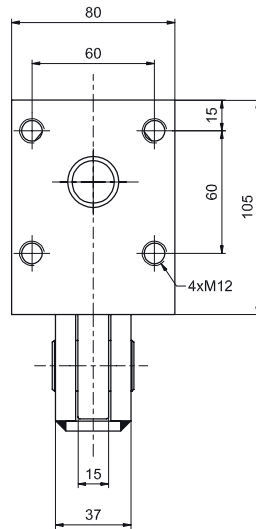
Rolle / Roller STR 070.4200



Traglast radial $F_R = 6 \text{ kN}$
Load capacity radial $F_R = 6 \text{ kN}$

Traglast axial $F_A = 3 \text{ kN}$
Load capacity axial $F_A = 3 \text{ kN}$

Rolle / Roller STR 080.4200



Traglast radial $F_R = 7,2 \text{ kN}$
Load capacity radial $F_R = 7,2 \text{ kN}$

Traglast axial $F_A = 3 \text{ kN}$
Load capacity axial $F_A = 3 \text{ kN}$

EDELSTAHL-TIGERROLLE / TIGER BEARING STAINLESS STEEL